

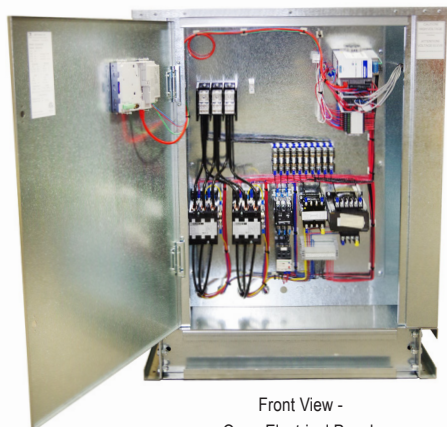
# PRODUCT DATA SHEET

Model: **IEZA52D**  
*Split-System Air-Cooled*  
*52 Ton Chiller*

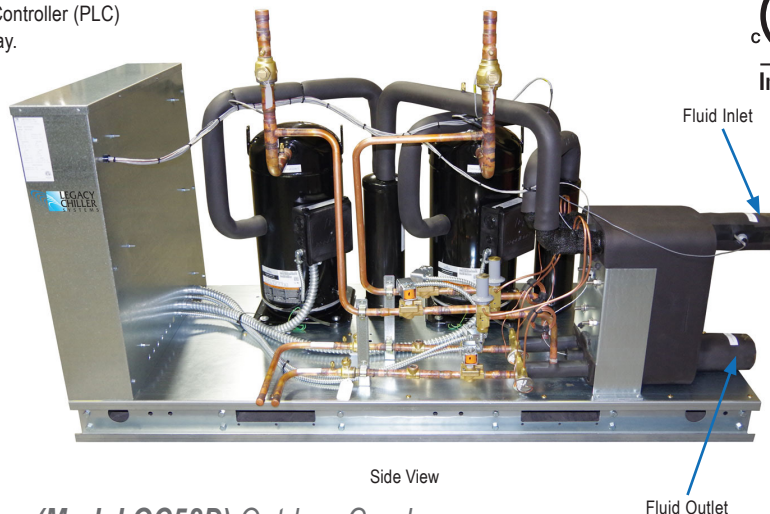


**Legacy Chiller Systems**  
851 Tech Drive  
Telford, PA 18969  
Toll-Free: (877) 988-5464

**STANDARD ON ALL LEGACY CHILLER MODELS:**  
Pentra Microsmart, Programmable Logic Controller (PLC)  
with HMI Touch Screen Display.



Front View -  
Open Electrical Panel



Side View

*\*Includes (Model OC52D) Outdoor Condenser*

## Standard Features:

- **ETL listed** to UL1995 & CAN/CSA C22.2 No. 236-11, 4th edition, 10/14/2011
- **Single point power connection**
- **Pentra Microsmart, Programmable Logic Controller (PLC) with easy to use HMI touch screen display**
- **STAINLESS STEEL**, brazed plate evaporator
- **Scroll** compressor with crankcase heater
- **Suction accumulator**
- **Water flow switch**
- **Hot gas by-pass capacity control**
- **24V control transformer**
- Direct drive condenser fan motor
- Rust resistant, high CFM, aluminum condenser fan blade
- Condenser(s): copper tube/aluminum fin
- Compressor motor contactor
- Condenser motor and control circuit fusing
- **Painted (Powder Coated), galvanized sheet metal cabinet**
- 1/2" insulation on all water and Low pressure refrigerant lines
- Liquid line drier, sight glass, solenoid, TXV
- Complete refrigerant charge from factory
- **Factory Performance Test prior to shipment**
- **Extended warranty:** See your quote or latest IOM booklet revision

**Easy to Use**  
**Touch Screen Display**  
**on all Legacy Chiller**  
**Models**



## Options:

- **Remote Idec touchscreen control panel**
- **Industrial VPN Router**
- **5 Port Ethernet Switch**
- **BacNet Gateway**
- **Process Pump VFD Controller**
- **VFD Compressor Control** on primary compressor
- 4 year extended compressor warranty
- Casters (factory mounted)
- 115 volt (rain tight) service outlet
- Non Fused Disconnect
- Phase Monitor, line voltage monitor offering protection against phase loss/reversal, unbalance and High/Low voltage
- Compressor fusing
- Compressor Sound Cover
- Flooded cond. w/receiver/head pressure control (0°F)
- Heated, flooded cond. w/receiver/head pressure Water flow meter control (-20°F)
- Pump suction isolation valve
- Water pressure gauge set
- Copper finned condenser coil (coastal protection)
- Coastal powder coat paint protection
- **E-Coat Condenser Coil (coastal protection)**
- Water Flow Meter
- Auto city water make up solenoid & auto level switch
- Auto city water changeover panel with filter
- Stainless steel, SCH80 PVC or Polypropylene piping for deionize and reverse osmosis water systems
- Door Mounted HMI with weather proof cover

# PRODUCT DATA SHEET

**Model: IEZA52D**  
*Split-System Air-Cooled*  
*52 Ton Chiller*



**Legacy Chiller Systems**  
 851 Tech Drive  
 Telford, PA 18969  
**Toll-Free: (877) 988-5464**

## Dimensional & Electrical Table (Dual Circuit)

Chiller Models	Length Inches	Width Inches	Height Inches	Power			Compressor		RLA ea.	LRA ea.	Fan Motor		MCA	M.O.P	Chiller Fluid Conn.	Weight LBS.	Condenser Selection
				Voltage	Phase	Freq.	Qty.	HP			Qty.	FLA.					
IEZA52DF5	85	34	42	208/230V	3	60Hz	2	30	109	599	4	7	300	350	2.5" MPT	1700	BNH434
IEZA52DH5				460V	3	60Hz			53.2	310		3.5	150	175			
IEZA52DI5				575V	3	60Hz			42.3	239		2.8	110	125			

## Capacity Table (Refrigerant R407C)

Model	Compressor	LWT °F	80°F			90°F			95°F			100°F			105°F		
			TONS	KW	EER	TONS	KW	EER	TONS	KW	EER	TONS	KW	EER	TONS	KW	EER
52D	ZR380KCE	42.0	52.4	48.4	11.9	49.8	53.2	10.1	47.6	56.1	9.4	47.3	58.8	8.9	45.8	61.5	8.2
		44.0	54.2	49.1	12.1	51.7	54.1	10.3	<b>50.5</b>	<b>56.7</b>	<b>9.6</b>	49.0	59.3	9.0	47.6	62.0	8.4
		45.0	55.0	49.0	12.3	52.5	54.5	10.4	51.2	56.9	9.7	49.8	59.5	9.1	48.0	62.2	8.5
		50.0	60.0	50.5	12.9	57.3	55.5	11.0	56.0	58.4	10.4	54.6	59.9	9.8	53.0	63.4	9.1



## Product Dimensional Drawing

